

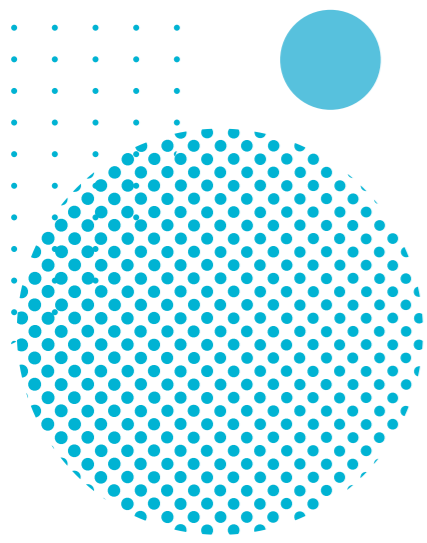
CLEVERTOUCH[®] Innovation
by Boxlight[®] for your world



Enterprise

The complete
Communication
and Collaboration
solution for an always
connected workplace

#clevertouch | info@clevertouch.com



Why Clevertouch?

The Clevertouch product range includes interactive displays, commercial displays, LED wall, room booking panels and digital signage. Our range of products can be connected simply and securely by our CleverLive and MDM remote content and management systems. Working with our partners, Logitech and Intel, we can provide Microsoft Certified Teams or Zoom rooms, making hybrid working easy and accessible to everyone.

At Clevertouch, we've developed a truly unified communications platform that is free from frustrations of incompatibility. Clevertouch products allows users to connect and collaborate no matter what device they are using and their choice of communication channels. Allowing you to establish a Digital Ecosystem that empowers users to communicate and collaborate across the entire organisation.

About Clevertouch

Established in 2009, Clevertouch began with interactive flat panels and soon expanded into a wider range of technology solutions.

Clevertouch is the only manufacturer to deliver industry-leading full-service, products and software solutions. Delivering a multi-awarding winning range of interactive collaborative meeting room panels, interactive collaboration teaching panels, digital signage, room booking, large format commercial displays, and wayfinding screens, Clevertouch offers a solution for every sector.

Clevertouch has partnered with the world's largest processor manufacturer and achieved Intel Gold Partner Status. This alliance is set to benefit our partners and customers with an even greater range of Intel-based products, and innovation to meet the needs of a new technology driven society in the post covid world.



Our Values

With our partners, our technology and our customers are at our core and we live these values:

- To empower every human being and organisation on the planet to achieve more.
- Encourage everyone to come together to explore and expand on ideas, bringing them to life without geographical or technological limitations.
- Delivering our very best in all we do.
- Being present, connecting with transparency, dignity and respect.



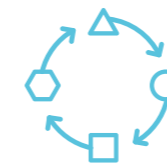
We are proud to be Number One in a number of countries!



We have pledged to become carbon neutral by 2025!



We really do care about diversity and inclusivity.



We're dedicated to working with companies who share our values. That's why we've partnered with industry leaders with collaboration at their core.



We offer a range of courses that have been carefully curated to give you the knowledge you need to excel.



Multi award-winning - our passion and drive for innovative technology is at the heart of our business.

80

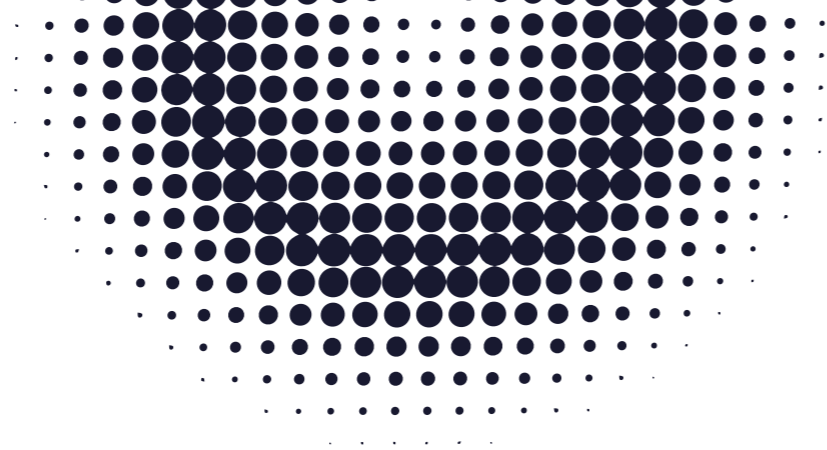
COUNTRIES

15

YEARS OF INNOVATION

22

NUMBER ONE IN 22 COUNTRIES

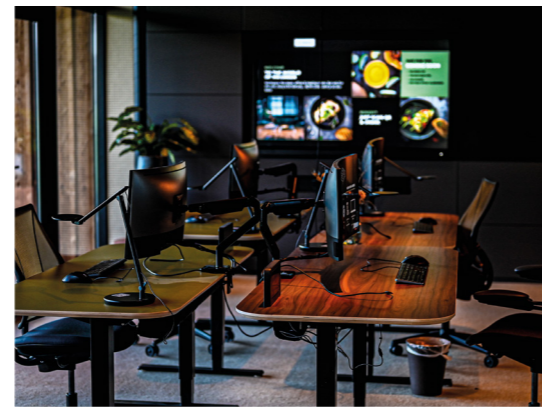


Case Studies

How one innovative designer at Green.DNA developed the 'Workspace 7.0' and fulfilled its vision with technology from Clevertouch.

"It should be a gift to be in the office here every day. Even if you are in a meeting and would like to order some food for your table guests, you can do so via the Clevertouch displays."

- Sam Verwijen, Managing Director at Green.DNA



With a bold and ambitious focus on going digital-first, The British Computer Society (BCS) built a new eco-system using Clevertouch.

"For every pound, we spent we wanted two-three uses out of the product. The Clevertouch screens provided the functionality of a whiteboard, presentation board and communication screen, giving you an all-in-one experience and great value for money."

- Hazel Reason, The Senior Facilities Manager at BCS



Nomios New Workspace - Better than being at Home!

"We don't tell our staff where to work or when to come in because, with the help of Pioneer, we have created a space that is better than being at home. The technology is more secure, faster, and has better sound and image quality. This workspace exceeds being at home. It allows people to be around others, collaborate and work better, and we love it."

- Richard Butcher, Managing Director at Nomios



AV Awards 2023
Digital signage Technology of the year - CleverLive 2023



InfoComm Best of Show 2023
Digital Signage Magazine Winner for UX Pro 2 2023



InfoComm Best of Show 2023
AV Technology Winner for UX Pro 2 2023



InfoComm Best of Show 2023
AV Technology Winner for CleverLive 2023



InfoComm Best of Show 2023
Tech & Learning Winner for CleverHub 2023



InfoComm Best of Show 2023
Tech & Learning Winner for CleverLive 2023



ISE Best in Show
Tech & Learning winner for IMPACT Max 2023



ISE Best in Show 2023
Tech & Learning Winner for LYNX Whiteboard 2023



ISE Best in Show 2023
AV Technology Winner for UX Pro 2 2023



Tech & Learning 2022 Best of Show Award Winners
2022



New Product Award
T|H|E Journal 2022



New Product Award
Campus Technology 2022



Primary Education
CleverLive digital cloud management platform 2022



Secondary Education
CleverLive digital cloud management platform 2022



Education Technology
Innovation of the year 2022 AV News Awards 2022



Best in Show
IMPACT Plus Generation 2 Interactive Touch Screen 2021



Best in Show Digital Signage
CleverLive digital cloud management platform 2021



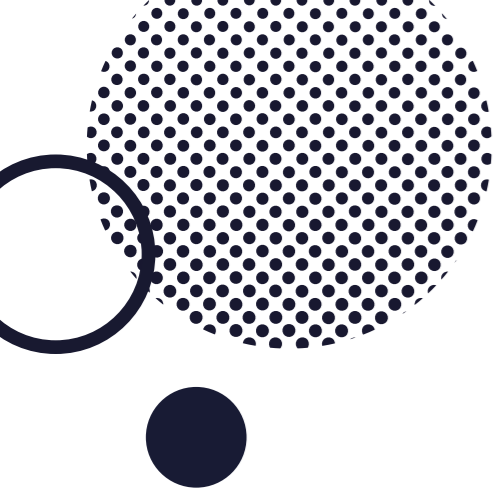
Innovation, design, high-quality, functionality, ergonomics, & ecology
IMPACT Plus 2020



Collaboration Innovation of the Year
IMPACT Plus 2020



Best in Show Tech & Learning
IMPACT Plus 2020



Offering flexibility for every office

We know It's important that every office has flexible spaces to work and collaborate. That's why our offering provides you with the tools you need to create a hub for thought leadership, in-person and virtual collaboration, customer events and meetings, and socialising with colleagues.

Download the Destination Office guide, which looks at current and projected trends, independent research, and other studies to provide a comprehensive solution to the future of the workplace.



Download the Destination Office Guide



Huddle Room

A hide away from the busy office environment for small groups discussions and sharing of ideas. These small informal meetings are perfect for video and audio conferencing with one-touch to launch a Zoom, Webex or Teams call.



Meeting Room

The perfect meeting room experience provides a hub for collaborative group work, both for those in the office and those virtually. The well-designed meeting room should be adaptable for you users, accommodating the use of personal devices and walk-in-and-use technology and include, large presentation screens for connecting remotely and collaborative work, access to crystal clear audio, and quick-start launchers.



Boardroom

The setting for key decisions and big ideas by senior management, the space, and technology of the boardroom should be sophisticated and be easy-to-use for all. A meeting space where professionals collaborate and present from multiple screens and facilities with wireless screen mirroring interactive whiteboard for brainstorming ideas, and intelligent sensors to keep track of the room's temperature, air quality, and more.

UX Pro Edge

Sizes: 65" | 75" | 86"



Get full specs here

NEW

Facilitated by FlatFrog In-Glass™ Technology, we bring you the Ultimate Meeting Room Solution

A total transformation for collaboration in the workplace. UX Pro Edge facilitates FlatFrog in-glass edge-to-edge technology to create a unique user experience.

Why Choose Flat Frog's InGlass™ technology?

Uncompromised Writing Performance for Digital Whiteboarding
The most natural and accurate writing experience that is as easy as using a traditional whiteboard. InGlass's™ optical emitters and detectors allow for a real time no-lag experience.

Google Enterprise Partner

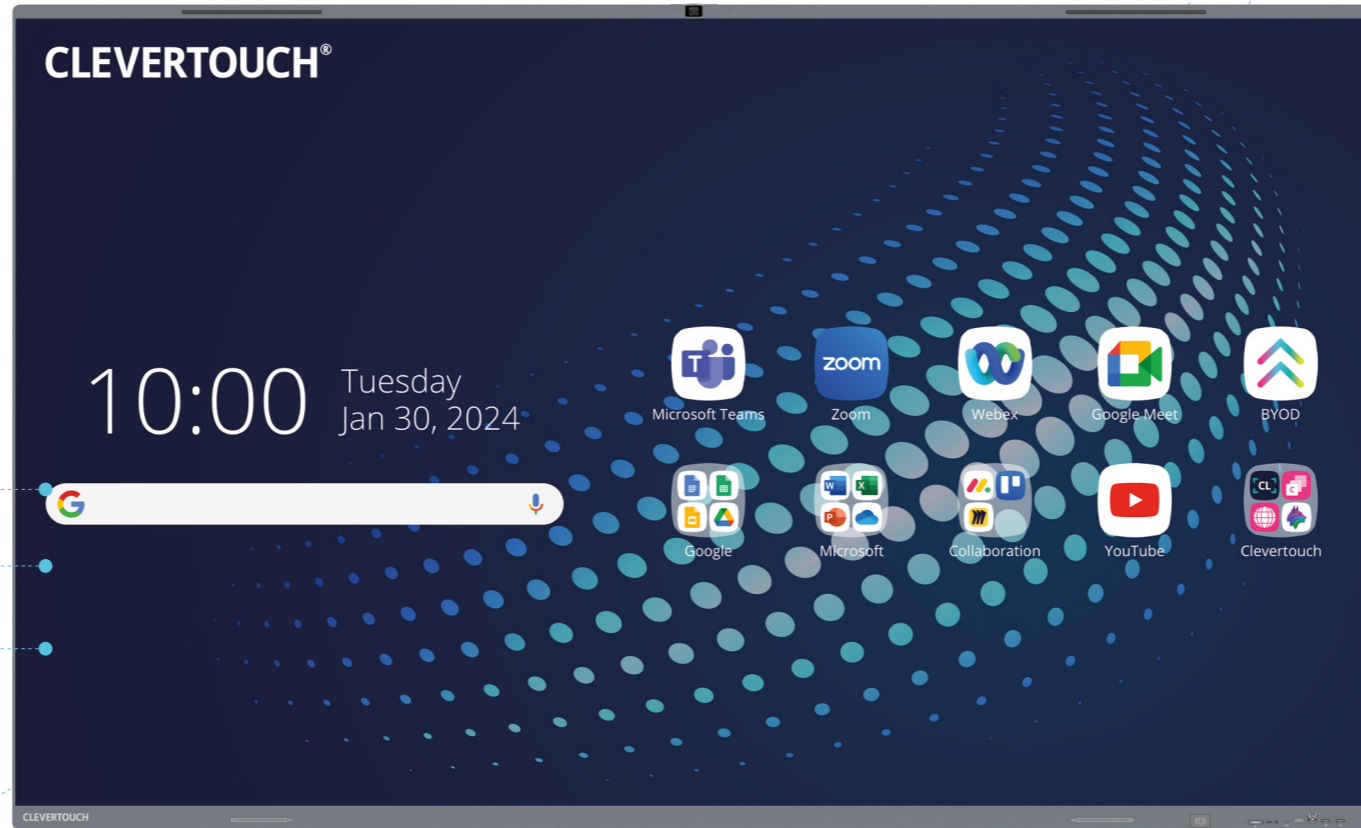
OPS i5 or i7 Intel PC

Always On

In-built camera with AI. One camera shows the room to online participants, and the other is powered by AI to allow focus and zoom on the person speaking.

CleverShare

Includes 1x CleverConnect USB-C devices and the CleverShare app. Use the app or plug the dongle into your laptop and screenshare, use and control all connected devices instantly.

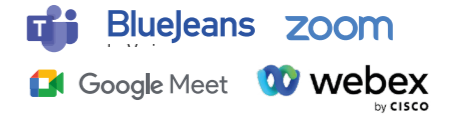


Security Matters

Advanced security and network options.

Stay Connected

Compatible with your preferred UC and VC applications:



USB Camera

Works with any USB camera or add our own camera, Clevercam.

Array microphone

Amazing Audio

Front-mounted 2x 20W speakers and 2x 10W subwoofers give a crystal clear audio experience.

USB-C charging

Android/PC

Switch between Android and PC mode, or switch off the Android capabilities and just use the PC.

PlayStore

Access the Google Play Store and Google Workplace, along with the full Microsoft 365 suite, directly from the screen. Use apps such as Google Drive, Docs, Sheets, Slides, Teams, Word and PowerPoint.

Any Screen, Any Time

With integrated NFC, users can simply swipe their fob, card or device to load their personal profile and settings, on any Clevertouch, anywhere in the world.

Key Features of Flat Frog's InGlass™ technology



Natural pen-on-paper experience



Passive pen no charging



Calligraphy writing with a brush



Palm rejection



Precision eraser using finger, palm or eraser



Flush design



High performance, commercial grade, direct view LED displays with pixel pitches from 1.2mm to 2.4mm and sizes to fit any environment.

LED All-in-one Intelligent Display

Enrich your customer experience with superior picture quality, audio and world-class reliability. Simple to install, with built in speakers and processor, CleverWall is the future of LED Videowalls.

Featuring All-in-one Design

- Integrated design with no external devices.
- Built-in Android System.
- Revolutionary 3-in-1 board that integrates a power supply, a receiving card and a hub board.
- Unified hardware and software technical support and service.
- The all in one CleverWall is a perfect solution and fit for any place and any size.

Delivery Simplicity and Efficiency

- Ease of use of the monitor functions with the remote control.
- Plug and play system, one button to turn on/off.
- Smart remote control to access settings.

Immersive meeting experiences

- Inbuilt audio system.
- Ultra-wide screen, presenting a exceptional AV experience.

Key Features

CLEVER® LIVE



Built-in audio



Screen share with 4 devices



Built-in Android Technology

Sync with your CleverLive account



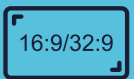
Lightweight



Less than 4 hour install time



Low maintenance costs



Aspect Ratio

CM Pro

Sizes: 32" | 43" | 49" | 55" | 65" | 75" | 98"



Get full specs here

NEW

CM Pro is a large format professional display complete with digital signage and meeting room system integration.

Delivering powerful brilliance with effortless control, CM Pro pushes the boundaries of technology, capturing and engaging with audiences.

Suitable for a range of applications and sectors this high-performance technology improves audience engagement to bring meeting presentations and digital signage content to life!



- Screen Share from any Device
- 4k Ultra HD Resolution
- Vibrant Picture Quality
- 16/7 Operation
- Control Integration
- Landscape & Portrait
- Digital Signage Posters/Video
- Power Management Scheduling
- Android Technology

Also available as a 24/7 operational commercial display. Get CM Pro eXtra specs here:



Built-In Digital Signage

Create dynamic digital posters for your CM Pro screen. Upload eye-catching full screen 1080p posters, photos or videos to share your company message in vivid detail. You can set them to play on a loop between meetings so your screen is never blank.



Premium Digital Signage

Upgrade to Premium Digital Signage by adding a Pico XI or Pro-V4 media player. This will allow you to push your posters, photos or videos to multi-zoned areas within your building with just a push of a button. Your reception or office team can set pre-determined triggers on a tablet/iPad allowing digital signage to be updated in seconds to your most frequently used messages.



CM Totem

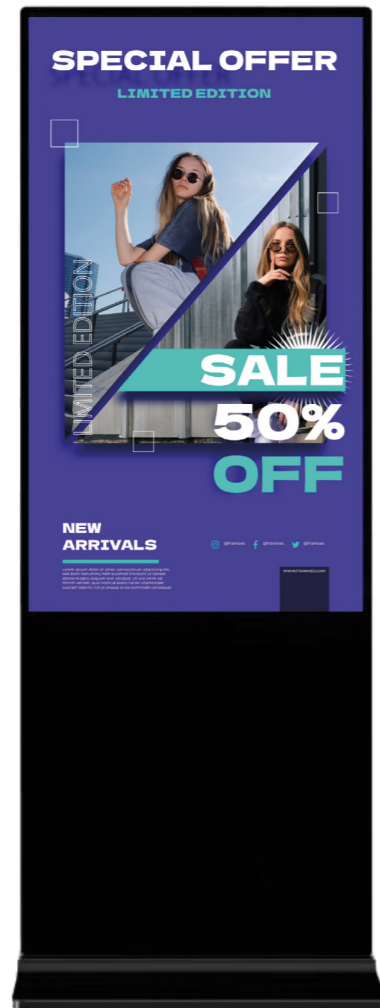
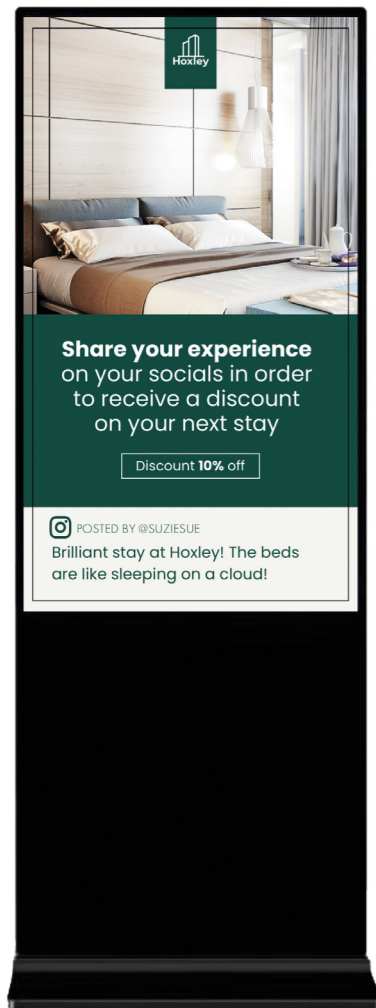
Sizes: 49" | 55"



Get full specs here

The ultimate freestanding commercial display, designed to revolutionise customer engagement and wayfinding.

Its sleek and ultra-slim design makes it a captivating addition to any retail, hospitality or enterprise environment. Utilise its full-screen display to showcase vibrant and dynamic images and videos that leave a lasting impact on customers.



CLEVER[®] LIVE

Subscription free feature rich digital signage.

Create your account today at cleverlive.com



Enhance your solution

Take your Totem to the next level - upgrade to fully multizone signage by adding a Pico XI media player within the cabinet. Display promotional offers, wayfinding maps, or social media feeds and more, across multiple zones to create a truly dynamic and tailored experience.

Key Features



Digital Signage Full Screen Posters & Videos



In-built QR code functionality



Android Technology



One Touch Messaging & Broadcasting



Power Management Scheduling



Ultra-slim, sleek modern design



24/7 Usage



HDMI In



Digital Signage

Pico XI

Manage your digital signage from a single platform enabling you to send content quickly and easily. The Pico MK5 is a functional media player supporting everyday digital signage requirements.



Get full specs here

Pro V4

Delivering powerful functionality for maximum digital signage performance. The Pro V4 is a robust fully featured digital signage player that delivers on functionality. Use as stand alone digital signage or integrate with additional products from the Digital Ecosystem to create an organisation wide communications solution.



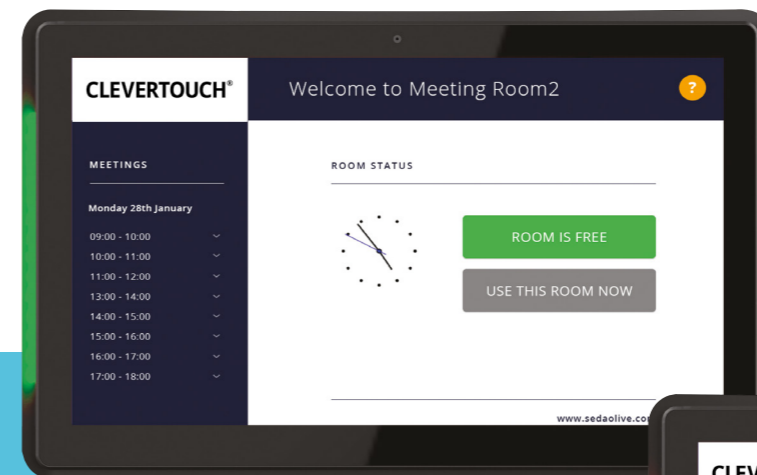
Get full specs here

Room Booking

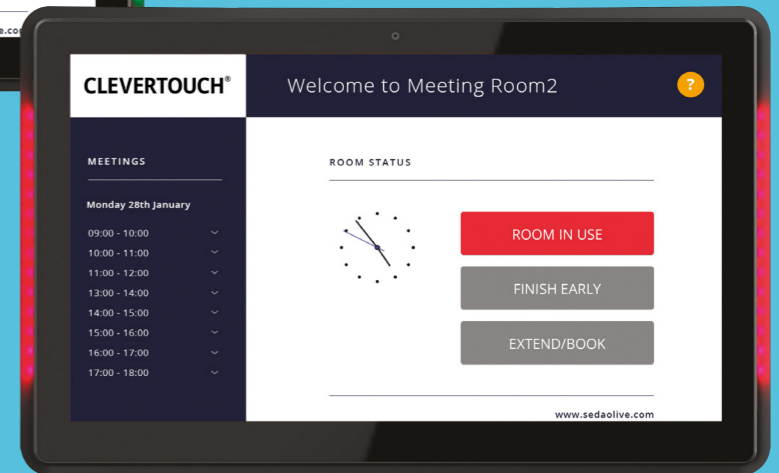
This room booking solution adds value to your organisation by improving meeting room booking efficiency. With a centrally managed platform that enables you to book from your desktop PC calendar or live at the source.



Our room booking solution - Live Rooms - also integrates with the Clevertouch Digital Ecosystem so you can send messages across your digital signage screens, interactive display panels as well as room booking. You can now display instant messages, promotions and communicate with staff on your entire suite all from the same platform you manage your room booking from.



Get full specs here



Meetings at a glance

With CleverLive Room Booking Software you can show all of your meeting spaces on one screen, and display this at multiple signage points around the office.

Key Insights

- A centrally managed platform
- Desktop PC Booking - MS Exchange and Outlook 365
- At source booking
- Personalise for company or visitor branding
- Power over Ethernet
- Availability status display - red in use & green available
- Updated status if meeting ends early
- Send instant messages to displays or playout digital signage
- Simple touchscreen interface
- Integrates with Microsoft Exchange
- Full function digital signage player
- Wall mounting brackets
- Quick and easy to use

PC Modules

The OPS PC for digital signage, turning your interactive flat panel into a big-screen all-in-one touch PC and powering smarter meeting rooms.



i5 OPS

10th Generation "Comet Lake" Processor, 8GB DDR4 2400 RAM, 250GB NVMe M.2 SSD, Supports up to 4K video resolution.

i7 OPS

10th Generation "Comet Lake" Processor, 16GB DDR4 2400 RAM, 250GB NVMe M.2 SSD, Supports up to 4K video resolution.



Get full specs here

Trolleys & Mounts

We have a variety of trolleys and mounts, all compatible with the Clevertouch displays. Choose electric trolleys with a lift and tilt functionality, allowing you to wheel it anywhere in the classroom or an electric wall mount if you plan to keep your screen attached to the wall.



Get full specs here



Adjustable mobile stands



Convertible mobile stands



Mini convertible mobile stands



Mini adjustable mobile stands



Fixed wall mounts



Adjustable wall mounts

CleverAccessories

CleverCam

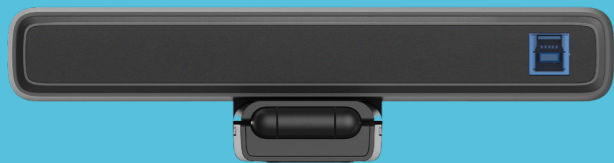
CleverCam is a 4K ultra-high definition ePTZ camera with a sleek, eye-catching design. CleverCam employs advanced ISP processing algorithms to provide vivid, vibrant images with uniform clarity, brightness, strong colour layering, high resolutions and fantastic colour rendition. With it's great functionality and superior performance, CleverCam is easy and convenient to install and maintain.



MIC
Built-in two omni-directional MIC pickups

Sensor
1/2.8 inch high quality CMOS sensor

Audio/Visual
Multiple Audio/Visual Compression Standard

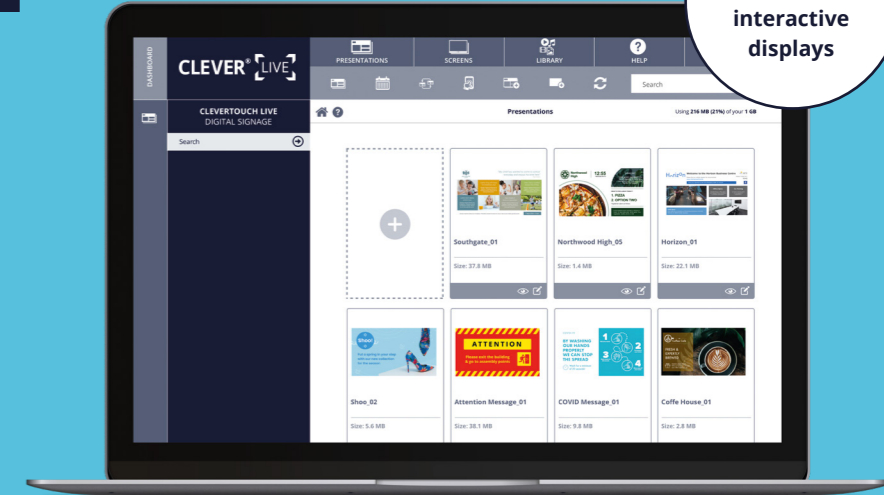


Get full specs here

CleverSoftware

CLEVER® LIVE

CleverLive manages content deployment to all your Clevertouch products. This digital signage software platform enables the creation, editing and management of content broadcast across one or multiple Clevertouch displays. It can be used with any internet-based device, such as a laptop, tablet, or mobile phone due to its cloud management functionality.



Included with interactive displays

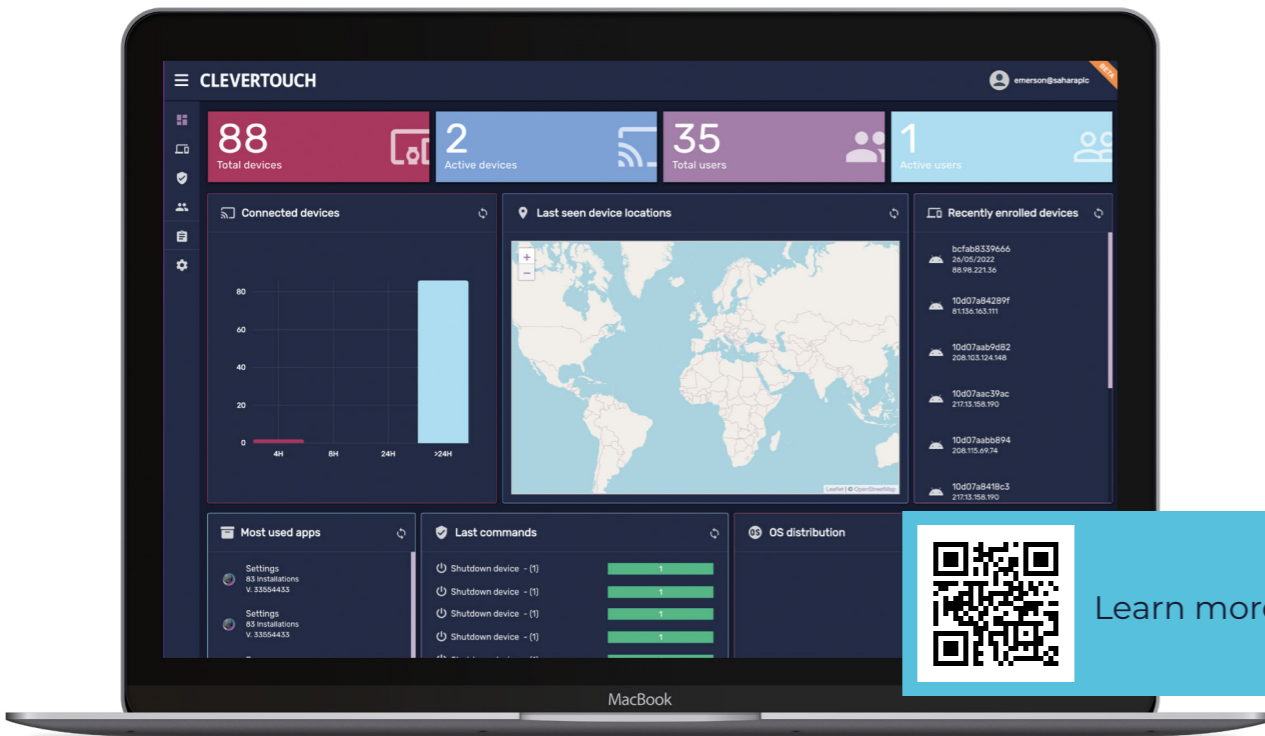


Get full specs here



Create your free account at CleverLive.com





CleverSoftware



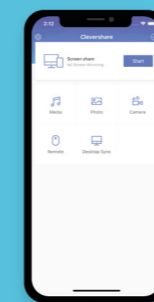
Flexibility is key in meetings

In-person, remote or hybrid - Clevershare gives you the freedom to host your meeting, your way. 62% of Enterprise users have more than 3 Unified Communication platforms. You need to be able to enter the meeting room and have the tools available to simply start a meeting on any of those UC platforms, whilst connecting to the display, audio and visual equipment in the room.



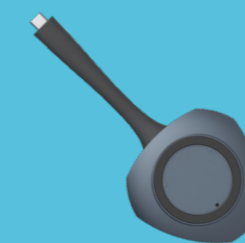
Total control of your organisation in just one click. IT staff no longer have to be physically present to overcome technical issues with our MDM end-point management solution. Furthermore, our system allows for remote analysis, updates, and central management across the entire organisation's interactive touchscreen fleet. The solution is cloud-based and requires only Wi-Fi for the effortless management of thousands of touch panels and devices.

Three methods, same experience



The App

Download it for free to any device. Enter the code from your UX Pro and instantly share content from your device to the large format display.



CleverCast Dongle

Plug the USB-C dongle into your laptop and click the button to share your screen with the UX Pro display.



The Hub

Clevershare technology on any screen. Connect the CleverHub to your commercial or interactive display and use either the App or the Dongle to share content.

One-tap to connect

With the App, Hub or Dongle, it's just one-tap to connect. No wires, no drivers, no passwords. Colleagues and visitors alike will share the same easy-to-use experience.



Learn more

Contact us for more details

info@clevertouch.com

clevertouch.com

